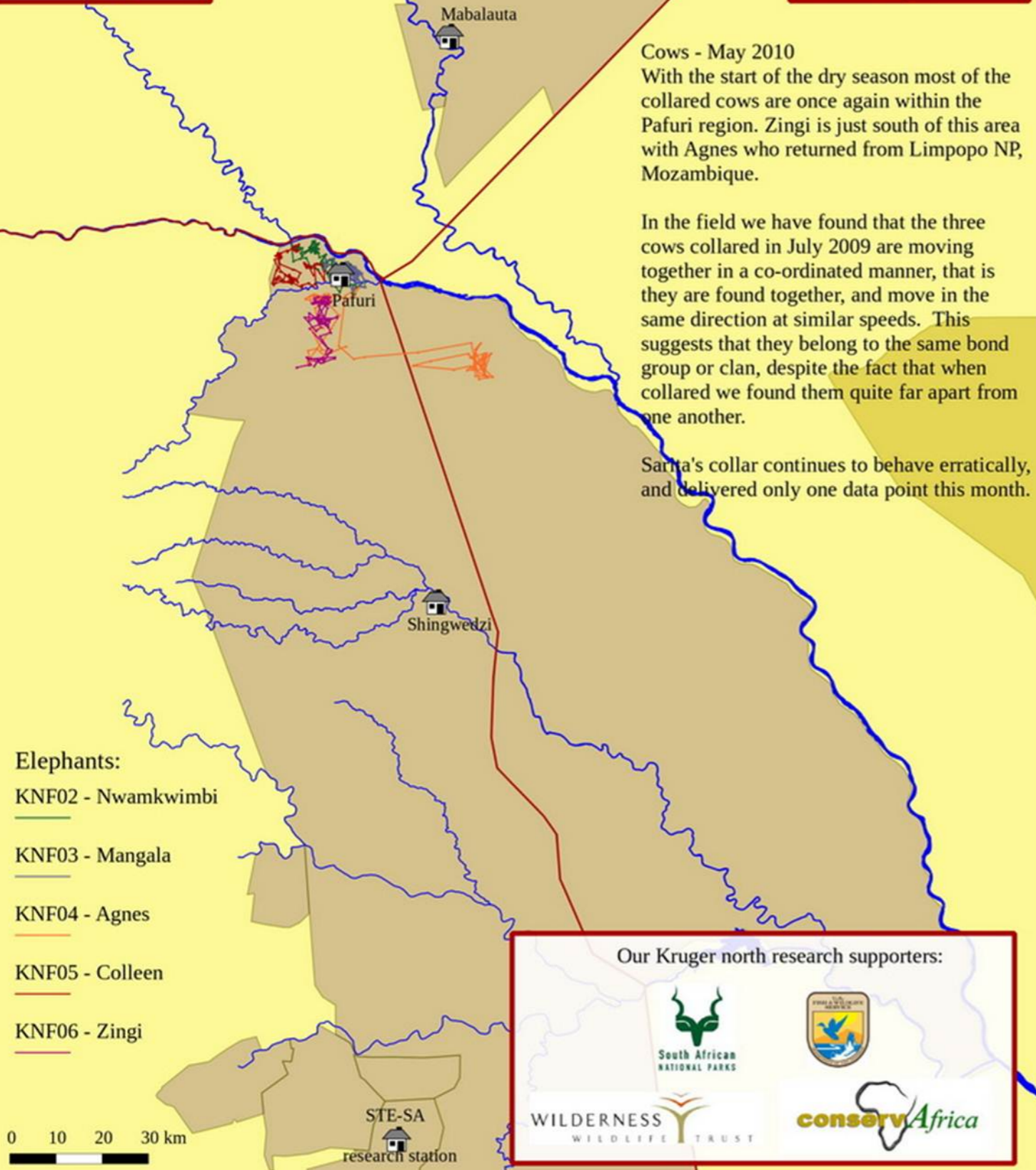


STE Transboundary Elephant Research Programme



Cows - May 2010
 With the start of the dry season most of the collared cows are once again within the Pafuri region. Zingi is just south of this area with Agnes who returned from Limpopo NP, Mozambique.

In the field we have found that the three cows collared in July 2009 are moving together in a co-ordinated manner, that is they are found together, and move in the same direction at similar speeds. This suggests that they belong to the same bond group or clan, despite the fact that when collared we found them quite far apart from one another.

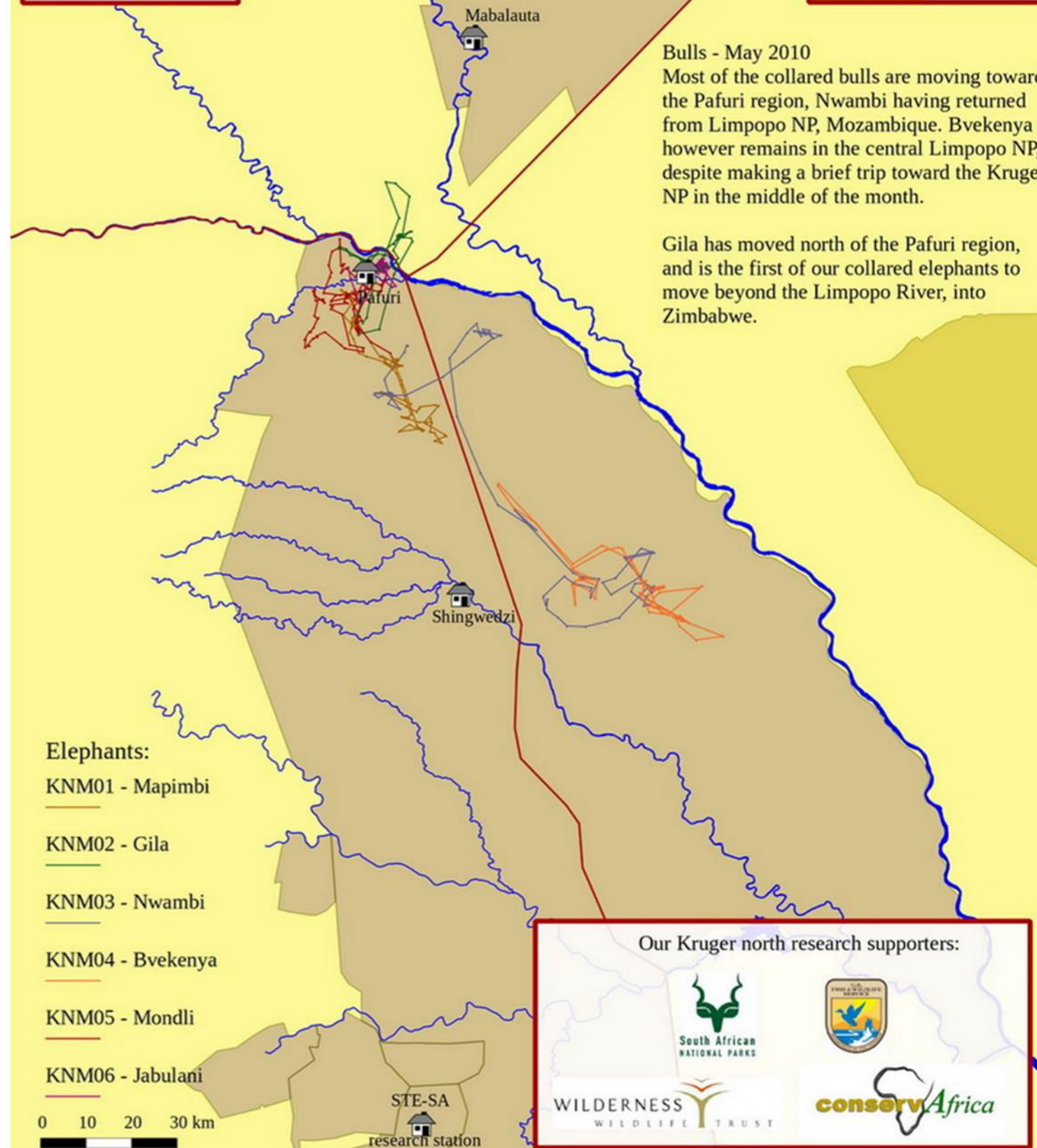
Sanna's collar continues to behave erratically, and delivered only one data point this month.

- Elephants:**
- KNF02 - Nwamkwimbi
 - KNF03 - Mangala
 - KNF04 - Agnes
 - KNF05 - Colleen
 - KNF06 - Zingi

Our Kruger north research supporters:



STE Transboundary Elephant Research Programme



Bulls - May 2010
 Most of the collared bulls are moving toward the Pafuri region, Nwambi having returned from Limpopo NP, Mozambique. Bvekenya however remains in the central Limpopo NP, despite making a brief trip toward the Kruger NP in the middle of the month.

Gila has moved north of the Pafuri region, and is the first of our collared elephants to move beyond the Limpopo River, into Zimbabwe.

- Elephants:**
- KNM01 - Mapimbi
 - KNM02 - Gila
 - KNM03 - Nwambi
 - KNM04 - Bvekenya
 - KNM05 - Mondli
 - KNM06 - Jabulani

Our Kruger north research supporters:

