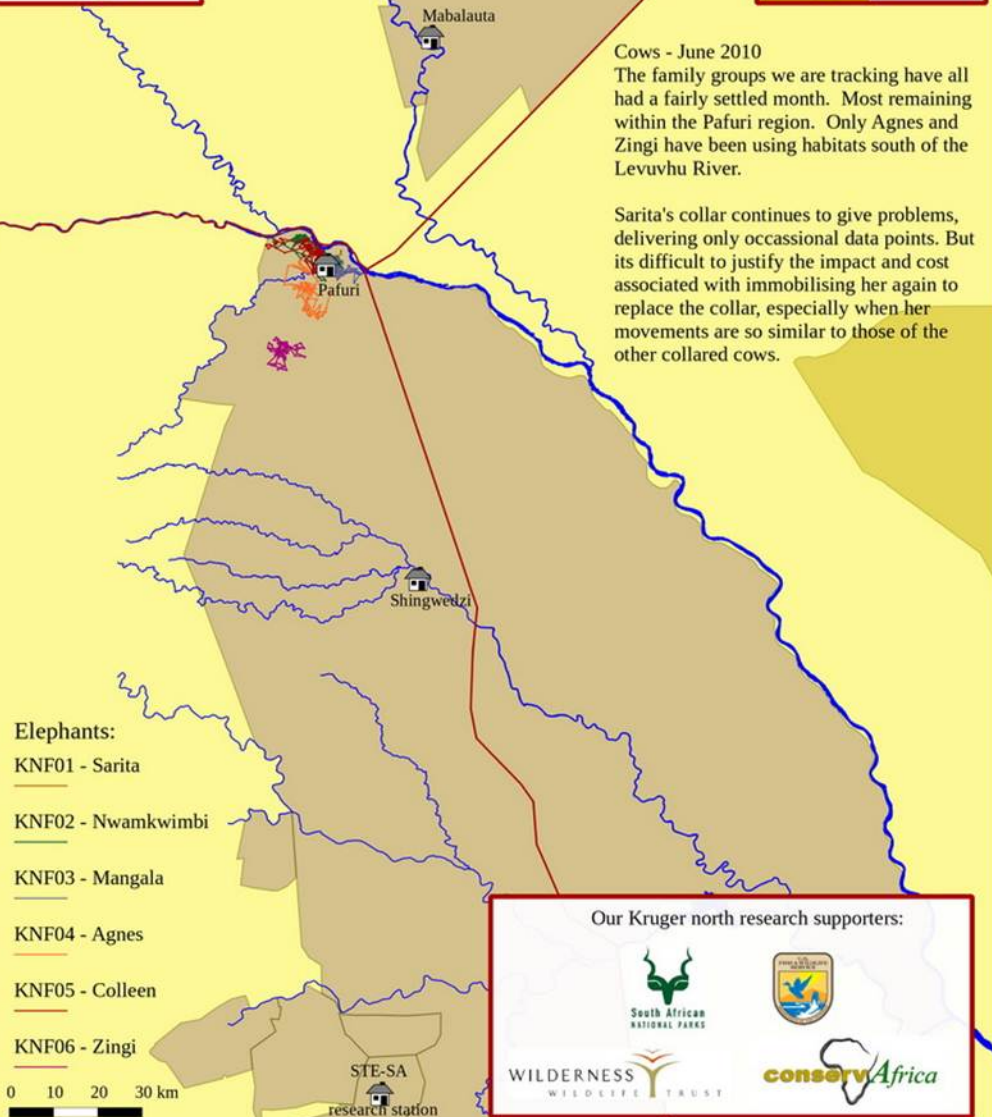


# STE Transboundary Elephant Research Programme



**Cows - June 2010**  
 The family groups we are tracking have all had a fairly settled month. Most remaining within the Pafuri region. Only Agnes and Zingi have been using habitats south of the Levuvhu River.

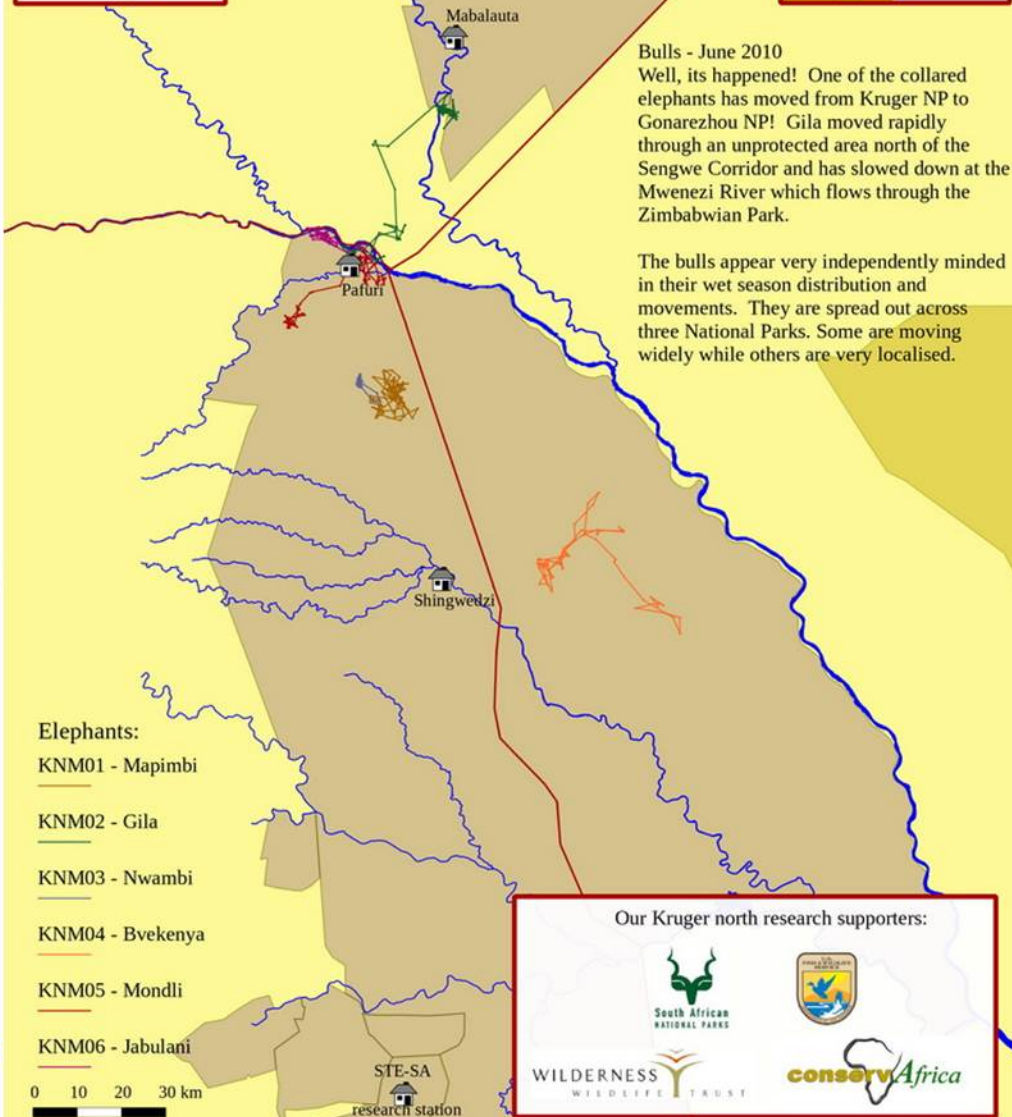
Sarita's collar continues to give problems, delivering only occasional data points. But its difficult to justify the impact and cost associated with immobilising her again to replace the collar, especially when her movements are so similar to those of the other collared cows.

- Elephants:**
- KNF01 - Sarita
  - KNF02 - Nwamkwimbi
  - KNF03 - Mangala
  - KNF04 - Agnes
  - KNF05 - Colleen
  - KNF06 - Zingi



**Our Kruger north research supporters:**

# STE Transboundary Elephant Research Programme



**Bulls - June 2010**  
 Well, its happened! One of the collared elephants has moved from Kruger NP to Gonarezhou NP! Gila moved rapidly through an unprotected area north of the Sengwe Corridor and has slowed down at the Mwenezi River which flows through the Zimbabwean Park.

The bulls appear very independently minded in their wet season distribution and movements. They are spread out across three National Parks. Some are moving widely while others are very localised.

- Elephants:**
- KNM01 - Mapimbi
  - KNM02 - Gila
  - KNM03 - Nwambi
  - KNM04 - Bvekenya
  - KNM05 - Mondli
  - KNM06 - Jabulani



**Our Kruger north research supporters:**